



Fantastic Phonics

Book 10 – The Dog in the Well

PHONEMIC AWARENESS (Identifying sounds in language)

- focus on short vowel sound / e /
- focus on Consonant Blend /l/+/l/ = / ll / as in ‘bell’
- Focus on Vowel Blend /o/ + /u/ = /ou/ as in “our”, “hour”

Say to your child	Together
<p>The first sound in WELL is / w /</p> <p>Listen, / w / (wuh), short and sharp</p>	<ul style="list-style-type: none"> • The first sound of WELL is ... • (say together) / w / “wuh” • Now the child repeats for you to hear/check.
<p>The MIDDLE sound in WELL is / e /</p> <p>Listen, / e / (short vowel)</p>	<ul style="list-style-type: none"> • The middle sound of WELL is ... • (say together) / e / “e” short vowel • Now the child repeats for you to hear/check.
<p>The END sound in WELL is / l / (luh)</p> <p>Listen, / l / (luh)</p> <p>double ‘ll’ is pronounced as single ‘l’</p>	<ul style="list-style-type: none"> • The end sound of WELL is ... • (say together) / l / “ll” • Now the child repeats for you to hear/check.
<p>Let’s blend the sounds together.</p> <p>/ w / e / l / makes “w-e-ll”</p> <p>And the word is WELL</p>	<ul style="list-style-type: none"> • Now let’s blend the sounds together. • / w / e / l / makes “w-e-ll” • And the word is WELL
<p>Repeat for additional words - Dell, fell, tell, yell, well, bell, dog, got, out, of, ran, rang + leg, let, yes, sell, set</p>	

Sight Words

one, two, the

Reinforce that these words are not for decoding but is a word to be remembered as a 'whole word', by sight.

Explain that **ONE** is sounded like 'won' (/w/o/n/)

Explain that **TWO** is sounded like 'too' (/t/oo/)

and, is, on, at, of

Reinforce that these words CAN be decoded (demonstrate /a/n/d/ and others) but they occurs so regularly that it's easier to memorise.

CONSONANT BLENDS

"when two letters create a single sound"

- **focus on /w/e/l/ (well)**

Blend two letters to a single sound	Together
Say the word WELL Show that the LAST sound is a blend of /l/+/l/ to make a single sound of /l/ Demonstrate with letter cards Say WELL as 3 sounds /w / e / l /	Together ... When the sounds /l/ and /l/ are together, they make a single sound which sounds like both $/l/ + /l/ = /l/$ and makes the sounds /w / e / l / Makes the word WELL
Continue to demonstrate with Dell, fell, tell, yell, well, bell	
Say the word RANG Show that the LAST sound is a blend of /n/+/g/ to a single sound of /ng/ Demonstrate with letter cards Say RANG as 3 sounds /r / a / ng /	Together ... When the sounds /n/ and /g/ are together, they make a single sound which sounds like both $/n/ + /g/ = /ng/$ and makes the sounds /r / a / ng / Makes the word RANG
Continue to demonstrate with bang, sang, hang	

<p>Say the word THREE</p> <p>Show that the first sound is a blend of /t+/h/ to make a single sound of /th/</p> <p>Demonstrate with letter cards</p> <p>Say THREE as 3 sounds / th / r / ee /</p>	<p>Together ...</p> <p>When the sounds /t/ and /h/ are together, they make a single sound which sounds like both</p> <p>/t/ + /h/ = /th/ and makes the sounds / th / r / ee /</p> <p>Makes the word THREE</p>
<p>Say the word SLID</p> <p>Show that the first sound is a blend of /s+/l/ to make a single sound of /sl/</p> <p>Demonstrate with letter cards</p> <p>Then say SLID as 3 sounds / sl / l / d /</p>	<p>Together ...</p> <p>When the sounds /s/ and /l/ are together, they make a single sound which sounds like both</p> <p>/s/ + /l/ = /sl/ and the word sounds like / sl / l / d /</p> <p>Makes the word SLID</p>
<p>Additional words</p> <p>Now demonstrate again with SLED, SLIP, WILL, FILL, SILL</p>	

VOWEL BLENDS

“when two VOWELS create a single sound”

- **focus on /o/u/r/ (our)**

Blend two letters to a single sound	Together
<p>Say the word OUR</p> <p>Show that the FIRST sound is a blend of /o+/u/ to make a single sound of /ou/</p> <p>Demonstrate with letter cards</p> <p>Say OUR as 2 sounds /ou+/r/</p>	<p>Together ...</p> <p>When the sounds /o/ and /u/ are together, they make a single sound which sounds like both</p> <p>/o/ + /u/ = /ou/ and makes the sounds /ou+/r/</p> <p>Makes the word OUR</p>
<p>Say the word HOUR</p> <p>Show that the MIDDLE sound is a blend of /o+/u/ to make a single sound of /ou/</p> <p>Demonstrate with letter cards</p> <p>Say HOUR as 3 sounds /h/ + /ou+/r/</p>	<p>Together ...</p> <p>When the sounds /o/ and /u/ are together, they make a single sound which sounds like both</p> <p>/o/ + /u/ = /ou/ and makes the sounds / h/ ou / r /</p> <p>Makes the word HOUR</p>

PHONOLOGICAL AWARENESS (linking Sounds with Letters)

Linking letters and sounds	Together
Hold up the lowercase letter “ w “ Say “this letter is called “w” (‘double-u’) and the sound it makes is / w / (“wuh” – short & sharp)	Together ... The letter is called “ double-u ” and the sound is / w / (wuh) As in WELL
With your letter cards, work through the additional words Dell, fell, tell, yell, well, bell, dog, got, out, of, ran, rang + leg, let, yes, sell, set	

Identifying sounds in Words
Form the word ‘ WELL ’ using lowercase cards. Point to each letter and make the phonic sounds; /w/ - / e / - / l / Remove the letter ‘w’ and ask, “what sound have I removed” Child should respond / w / (wuh sound) Ask, “what sounds are left – point to the letters and make the sounds” Child should point and respond, / e / + / l / Ask, “what sounds does / e / + / l / make together” Child should point and respond / e / l / Then put the letter back into position and ask, “what does the letters make now” Child should point to each letter, say each sound, and finish with WELL Repeat by removing the END letter.
With your letter cards, work through the additional words Dell, fell, tell, yell, well, bell, dog, got, out, of, ran, rang + leg, let, yes, sell, set

Rhyme	Rhyme Detection
1	<p>Read the following words and ask the child to tell you the words that DO rhyme with WELL (e.g, the 'ell' sound)</p> <p>Dell, got, fell, out, tell, ran, yell, well, leg, bell, yes sell, dog</p>
2	<p>Read the list again and ask the child which words DO NOT rhyme with WELL</p>
3	<p>Say the word WELL and ask the child to suggest two words that rhyme</p>
4	<p>Select the letters w, f, y, d, b, s, e, l, from your cards (need two 'l' cards)</p> <p>Ask the child to use the letter cards to form the words ...</p> <p>Dell, fell, tell, yell, well, bell,</p>

Re-Arrange Letters
<p>Choose the letters b, e, l, l from your letter cards and arrange them so they DON'T form a word</p> <p>Say the word BELL, and sound it out /b/e/l/</p> <p>Ask your child to arrange the letters to create the word</p>
<p>Continue for words Dell, fell, well, tell, yell, one, two</p>

SYLLABLES

RULES ABOUT SYLLABLES

- Each syllable **MUST** have a vowel
- A syllable can be just a **SINGLE VOWEL** (o-pen, a-bout, e-qual, cre-a-tion)
- When a syllable ends on the vowel, the vowel sound is **LONG**
 - E.g. **'to-day', 'do-nate', "mu-sic"**
- When a syllable ends on a consonant, the vowel sound is **SHORT**
 - **"ov-en", "un-der", "sev-en"**

Syllables	Together
Say the word "open" Stress the separate syllables by clapping your hands (with each syllable). "o-pen"	Together ... Say "o-pen" while clapping your hands Say is slowly so the child can hear clearly, then repeat faster and faster till they merge.
Using your letter cards, spell 'o' and "pen" but leave them slightly separate.	Point to each syllable, say "o" and "pen" Move them together and say "o-pen" Then finish with "OPEN"
<p>"OPEN" is a special – but not rare – case where a syllable is a single vowel, similar to 'again' (a-gain), 'about' (a-bout), 'away' (a-way)</p> <p>With your letter cards, work through the additional words (Notice that each syllable contains a vowel)</p> <p>Baby (ba-by), also (al-so), hero (he-ro)</p>	



Fantastic Phonics

www.teachtheworldtoread.com

Book 10 Worksheets

The Dog in the Well- sound is short vowel / e /

Read the Phonemic awareness guide so you can explain. DOUBLE "L" (ll) is a single sound.

Sound each letter separately	Then blend, stressing the vowel.	Then say as a blended whole word
b e ll	b-e-ll	bell
f e ll	f-e-ll	fell
w e ll	w-e-ll	well
y e ll	y-e-ll	yell
D e ll	D-e-ll	Dell
t e ll	t-e-ll	tell
d o g	d-o-g	dog

Sight words

The one two on off of



Fantastic Phonics

www.teachtheworldtoread.com

Parent says the words (**bell, fell, well, yell, Dell, tell**) and sounds each one out and asks the child to fill in the missing letter.

b _ ll

fel _

_ ell

y _ ll

Del _

_ ell

Ask your child to re-arrange the letters to form a word - help them by "saying and sounding" each word (**bell, dog, rang, ran**)

ebll

god

sngnr

nar

Read the sentence, and ask your child to write the words in correct order below
(**The dog fell in the well.**)

dog The in well. the fell



Fantastic Phonics

www.teachtheworldtoread.com

EXTRA WORDS

POINT to each letter and "SOUND" them separately	Then blend, stressing the vowel.	Then say as a blended whole word
g o t	g-o-t	got
l o t	l-o-t	lot
d o t	d-o-t	dot
n o t	n-o-t	not
c o t	c-o-t	cot
r o t	r-o-t	rot
s h e l l	s-h-e-l-l	shell
s w e l l	s-w-e-l-l	smell



Fantastic Phonics

www.teachtheworldtoread.com

Create a sentence

Ask your child to write a freeform sentence using the words below.

- It can be long or short, and does not have to use all the words.
- It does not have to be a sentence from the story.
- It can use the same word twice

Dog, Dell, bell, fell, well, Dad, ran, bell, rang,
the, he, has, is, to had, on, the, a, and

Sentence 1

Sentence 2

What word does not rhyme

Ask your child to read out and identify the word that doesn't rhyme

well, fell, fill, tell, bell

yell, bell, sell, fell set

got, spot, slot, nut, hot



Fantastic Phonics

www.teachtheworldtoread.com

Complete the sentences

Ask your child to choose a word (below) to complete the sentences.
If your child cannot remember the sentences, they can re-read the story.

(The words below are in the correct order)

fell well tell dog rang Dad
had yell Dell got out

The dog _____ in the _____. Dell, _____

Dad the ____ fell in the well.

Dell _____ the bell to tell ____ the dog

fell. Dell ____ to _____, “the dog is in

the well.”

Dad ran to _____ at the well. Dad ____

the dog ____ of the well.



Fantastic Phonics

Puzzles

Copyright 2014 www.FantasticPhonics.com

Book 10 Puzzle – style 1

B	E	L	L	T	M	O	L
Y	A	A	T	R	E	K	F
B	E	L	T	W	Q	L	E
R	D	L	N	E	U	I	L
A	E	K	L	L	T	J	L
N	L	M	T	L	H	D	T
G	L	D	O	G	E	A	V
N	T	A	H	A	D	D	Q

Words used

BELL

BELL

DAD

DELL

DOG

FELL

HAD

RANG

TELL

THE

WELL

YELL

Book 10 Puzzle – style 2

B	Y	B	R	A	N	G	N
E	A	E	D	E	L	L	T
L	A	L	L	K	M	D	A
L	T	T	N	L	T	O	H
T	R	W	E	L	L	G	A
M	E	Q	U	T	H	E	D
O	K	L	I	J	D	A	D
L	F	E	L	L	T	V	Q

Words used

BELL

BELL

DAD

DELL

DOG

FELL

HAD

RANG

TELL

THE

WELL

YELL



Fantastic Phonics

Puzzles

Copyright 2014 www.FantasticPhonics.com

Book 10 Puzzle – Style 1 Solution



Words used

BELL
BELL
DAD
DELL
DOG
FELL
HAD
RANG
TELL
THE
WELL
YELL

Book 10 Puzzle – Style 2 Solution



Words used

BELL
BELL
DAD
DELL
DOG
FELL
HAD
RANG
TELL
THE
WELL
YELL

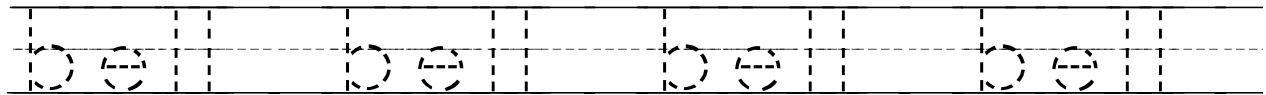
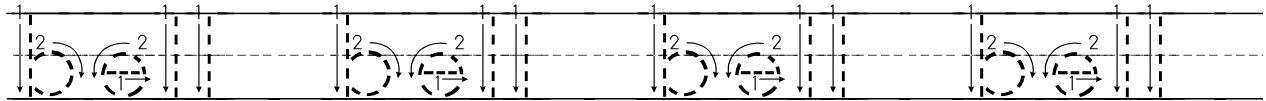


Fantastic Phonics

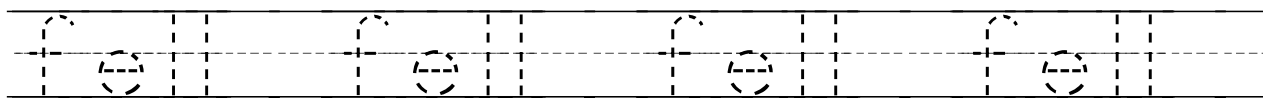
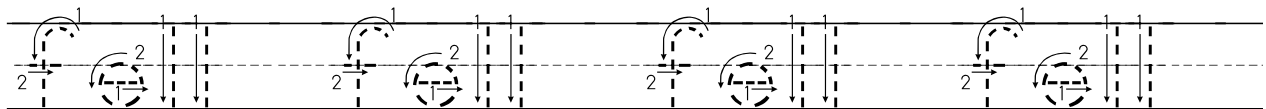
Puzzles

Copyright 2014 www.FantasticPhonics.com

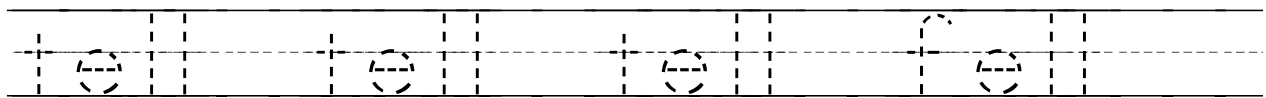
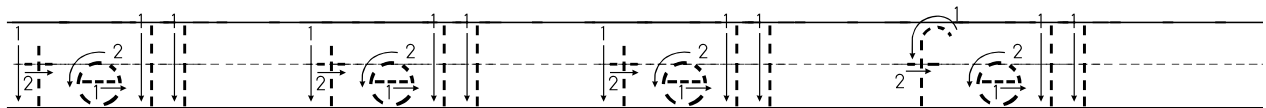
bell bell bell bell



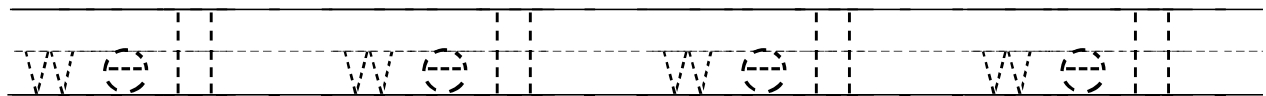
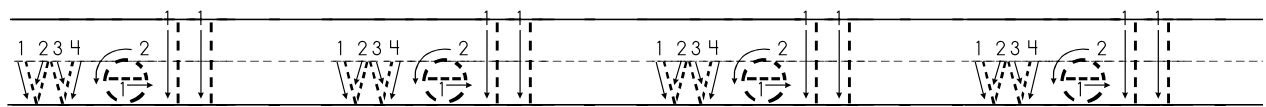
fell fell fell fell



tell tell tell fell



well well well well



The dog fell in the well.

The dog fell in the well.

The dog fell in the well.

Dell rang the bell.

Dell rang the bell.

Dell rang the bell.

Dad ran to Dell.

Dad ran to Dell.

Dad ran to Dell.

Dad got the dog out.

Dad got the dog out.

Dad got the dog out.

Dad got the dog out.

Dad got the dog out.

Dell had to yell,
“the dog is in the well.”
Dad ran to Dell
and got the dog out
of the well.

Dell had to yell,

“the dog is in the well.”

Dad ran to Dell

and got the dog out

of the well.

Dell had to yell,

“the dog is in the well.”

Dad ran to Dell

and got the dog out

of the well.